

## DATACARD® CAPTURE PLUG-IN TOOL



Easily upgrade your photo ID issuance program

- Easy to install, easy to use
- Offers four convenient options for incorporating high-quality images on personalized ID cards, including:
  - Import an existing photo file
  - Use a TWAIN-compliant capture device
  - Capture a photo from video
  - Connect device to a variety of DSLR cameras

### Increase photo capture flexibility with the free Capture Plug-in Tool

The Datacard® Capture Plug-in Tool works seamlessly with Datacard® identification software to make capturing images for photo ID cards fast and easy. In addition to easily importing an existing photo file, the free Capture Plug-in Tool enables issuers to use their favorite market-ready camera to capture and import images from both video and photo settings.

The Capture Plug-in Tool works in combination with Datacard® identification solutions to provide everything needed to launch a successful ID card program. The Datacard® identification software platform features an innovative, modular design that lets you upgrade capabilities as needed. The Capture Plug-in Tool, identification software, and Datacard® desktop printers are fully-integrated, which ensures simple installation and minimal set-up time.

### Increase photo capture functionality with a variety of editing features

**Auto Capture.** When an operator initiates a photo capture, the camera takes the picture without further operator intervention. This option is ideal when speed is a prime consideration.

**Auto Crop.** Once the image has been captured, it is automatically cropped and appears in the ID Works photo field. Images are automatically cropped based on settings defined during set-up, which helps ensure consistent cropping.

**Manual Capture From Video.** Operators view live stream video on their monitor. Once the image box is clicked, the image is frozen and then captured.

**Manual Crop.** Once the image has been captured, the crop screen will appear. The operator can easily adjust the crop by clicking and dragging the image box.

**Photo Enhancement Screen.** This screen provides up to 27 thumbnails to choose from, each with a unique combination of brightness, saturation and contrast.



SIGN UP FOR DATACARD NEWS  
[www.datacard.com/subscribe](http://www.datacard.com/subscribe)

DatacardGroup

## Intuitive interface makes capturing images fast and easy

Datacard® identification software automatically opens a digital card layout on your computer screen. Simply right-click on the photo box, then select “Capture Source” from the toolbar and choose your source from the drop-down window. Choose from any of the four easy-to-use photo capture options below.

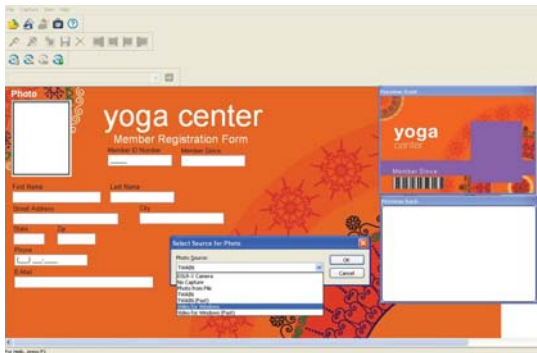


### Import an existing photo file

1. Right-click 'Photo Field'
2. Select 'Import'
3. Select your image from the folder

### Use a TWAIN-compliant capture device

1. Right-click 'Photo Field'
2. Select 'Capture Source'
3. Click the drop-down menu
4. Select 'TWAIN', click 'OK'
5. Double-click the photo field to capture a new image



### Capture a photo image from imported video

1. Right-click 'Photo Field'
2. Select 'Capture Source'
3. Click the drop-down menu
4. Select 'Video for Windows', click 'OK'
5. Double-click the photo field to capture a new image

### Connect device to a variety of DSLR Cameras\*

1. Right-click 'Photo Field'
2. Select 'Capture Source'
3. Click the drop-down menu
4. Select 'DSLR', click 'OK'
5. Double-click the photo field to capture a new image

**Datacard**Group

#### CORPORATE HEADQUARTERS

11111 Bren Road West  
 Minnetonka, Minnesota 55343-9015  
 Phone: +1 952 933 1223  
[www.datacard.com](http://www.datacard.com)  
[info@datacard.com](mailto:info@datacard.com)

Datacard is a registered trademark and/or service mark of DataCard Corporation in the United States and/or other countries. Canon is a registered trademark of Canon U.S.A., Inc.

\* Datacard has approved 14 Canon® DSLR cameras, including: Canon EOS-1D Mark III, Canon EOS 40D, Canon EOS-1Ds Mark III, Canon EOS 450D/Rebel XSi, Canon EOS 1000D/Rebel XS, Canon EOS 5D Mark II, Canon EOS 50D, Canon EOS 500D/Rebel T1i, Canon EOS 7D, Canon EOS-1D, Mark IV, **Canon EOS 550D/Rebel T2i, Canon EOS 60D, Canon EOS 600D/Rebel T3i**, and Canon EOS 1100D/Rebel T3. Cameras listed in bold have been tested by the Datacard Group.

©2010-2012 DataCard Corporation. All rights reserved. Specifications subject to change without notice. Solution configuration is subject to financial card association guidelines in your region. Printed in U.S.A.